



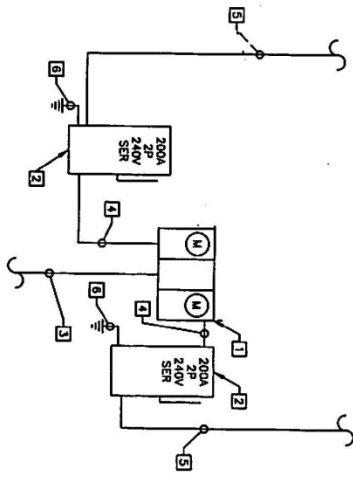
Submission Requirement for Commercial Electrical System Plan Review

When applying for an electrical permit, three (3) copies of plans and specification of the proposed work shall be submitted for new buildings. For existing buildings two (2) copies of the plans and specifications of the proposed work shall be submitted. The plans shall be drawn to a scale with sufficient clarity and detail to show the extent and intension of the work being permitted. All submittals shall be accompanied by a completed Electrical Permit Application.

Electrical Plans shall include:

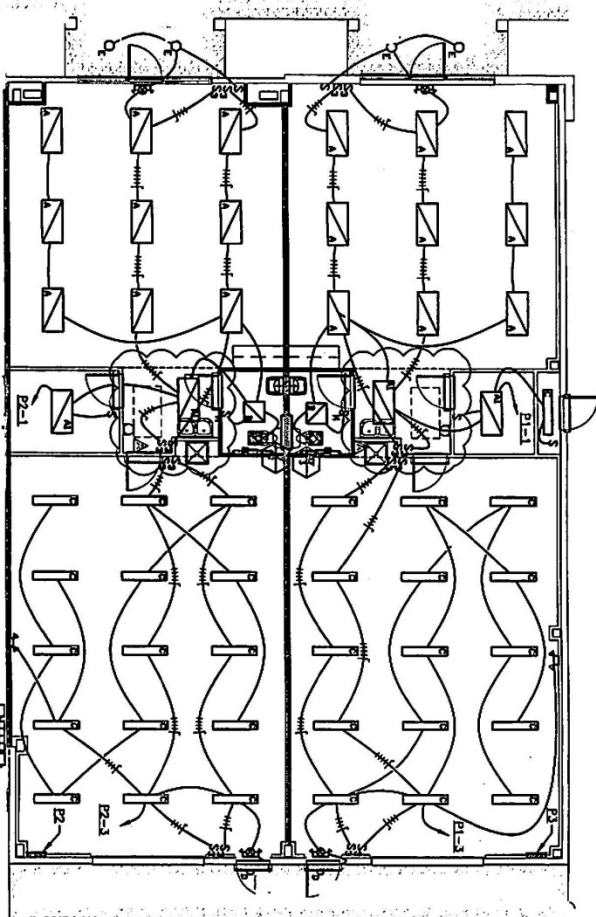
1. Building floor plan(s) showing lighting and power layout(s).
(See Exhibit “A” & “B”)
2. Location(s) of panel(s) and meter(s).
3. Provide a riser diagram and panel schedule(s), service voltage, current and phase, conductor and conduit sizes. (See Exhibit “B”)
4. Provide circuit home runs and relate these to panel designation(s).
(See Exhibit “A”)
5. Provide lighting fixture schedule. (See Exhibit “B”)
6. Location(s) of exit and emergency egress lighting and their respective circuits.
7. New buildings are required to comply with the energy conservation provisions of the Virginia Energy Code, submit documentation to support the electrical design compliance i.e. ASHRAE 90.1-2010, ComCheck
(www.energycodes.gov/comcheck)
8. New projects will require a Fault Current Certification from Dominion Virginia Power

Electrical plans and specification shall include the seal and signature of the design professional under whose supervision they were prepared **OR** if exempt under the provisions of Title 54.1-402 of the Virginia Code, the name, address and Master Tradesman card number of the Master Electrician under whose supervision the documents were prepared shall be affixed to each page of the plans.



RISER DIAGRAM
SCALE NONE

- RISER DIAGRAM NOTES:**
- 1 3 GANG, 240V, 1PH, 3W, NEMA 3R, METER BASE WITH (3) 200A METER SOCKETS.
 - 2 200A-2P, 240V, NEMA 3R, SERVICE ENTRANCE RATED (SER) DISCONNECT SWITCH.
 - 3 3" EMPTY CONDUIT DOWN 2'-0" B.F.G. AND OUT 5'-0" FROM EDGE OF BUILDING. VERIFY CONDUIT SIZE AND COMPONENT INSTALLATION WITH VA POWER.
 - 4 2" CONDUIT WITH 3/4" O.D. 1/8" GND.
 - 5 2" CONDUIT WITH 3/4" O.D. 1/8" GND. EXTEND TO PANEL IN TENANT SPACE.
 - 6 1/4" GND. TO BUILDING STEEL, 1/4" GND. TO FIRST 5'-0" OF METALLIC INCOMING COLD WATER PIPING, 1/4" GND. TO FOOTING REBAR (SEE FOOTER CRACKING DETAIL SHEET E-1), 1/8" GND. TO GROUNDING ROD.



LIGHTING PLAN

SEE RISER DIAGRAM
MANNING N.E.C. CLEARANCES.

LIGHTING FIXTURE SCHEDULE

NO.	DESCRIPTION	LOCATION	MANUFACTURER	CATALOG NUMBER	WATT	LAMP	SPACING	NOTES
1	2' x 4' RECESSED LIGHT	HALL	OSRAM	OSRAM-400-1/2	150	OSRAM-40	8'-0"	1
2	2' x 4' RECESSED LIGHT	REAR OFFICE	OSRAM	OSRAM-400-1/2	150	OSRAM-40	8'-0"	1
3	2' x 4' RECESSED LIGHT	REAR OFFICE	OSRAM	OSRAM-400-1/2	150	OSRAM-40	8'-0"	1
4	2' x 4' RECESSED LIGHT	REAR OFFICE	OSRAM	OSRAM-400-1/2	150	OSRAM-40	8'-0"	1
5	2' x 4' RECESSED LIGHT	REAR OFFICE	OSRAM	OSRAM-400-1/2	150	OSRAM-40	8'-0"	1
6	2' x 4' RECESSED LIGHT	REAR OFFICE	OSRAM	OSRAM-400-1/2	150	OSRAM-40	8'-0"	1
7	2' x 4' RECESSED LIGHT	REAR OFFICE	OSRAM	OSRAM-400-1/2	150	OSRAM-40	8'-0"	1
8	2' x 4' RECESSED LIGHT	REAR OFFICE	OSRAM	OSRAM-400-1/2	150	OSRAM-40	8'-0"	1
9	2' x 4' RECESSED LIGHT	REAR OFFICE	OSRAM	OSRAM-400-1/2	150	OSRAM-40	8'-0"	1
10	2' x 4' RECESSED LIGHT	REAR OFFICE	OSRAM	OSRAM-400-1/2	150	OSRAM-40	8'-0"	1
11	2' x 4' RECESSED LIGHT	REAR OFFICE	OSRAM	OSRAM-400-1/2	150	OSRAM-40	8'-0"	1
12	2' x 4' RECESSED LIGHT	REAR OFFICE	OSRAM	OSRAM-400-1/2	150	OSRAM-40	8'-0"	1
13	2' x 4' RECESSED LIGHT	REAR OFFICE	OSRAM	OSRAM-400-1/2	150	OSRAM-40	8'-0"	1
14	2' x 4' RECESSED LIGHT	REAR OFFICE	OSRAM	OSRAM-400-1/2	150	OSRAM-40	8'-0"	1
15	2' x 4' RECESSED LIGHT	REAR OFFICE	OSRAM	OSRAM-400-1/2	150	OSRAM-40	8'-0"	1
16	2' x 4' RECESSED LIGHT	REAR OFFICE	OSRAM	OSRAM-400-1/2	150	OSRAM-40	8'-0"	1
17	2' x 4' RECESSED LIGHT	REAR OFFICE	OSRAM	OSRAM-400-1/2	150	OSRAM-40	8'-0"	1
18	2' x 4' RECESSED LIGHT	REAR OFFICE	OSRAM	OSRAM-400-1/2	150	OSRAM-40	8'-0"	1
19	2' x 4' RECESSED LIGHT	REAR OFFICE	OSRAM	OSRAM-400-1/2	150	OSRAM-40	8'-0"	1
20	2' x 4' RECESSED LIGHT	REAR OFFICE	OSRAM	OSRAM-400-1/2	150	OSRAM-40	8'-0"	1
21	2' x 4' RECESSED LIGHT	REAR OFFICE	OSRAM	OSRAM-400-1/2	150	OSRAM-40	8'-0"	1
22	2' x 4' RECESSED LIGHT	REAR OFFICE	OSRAM	OSRAM-400-1/2	150	OSRAM-40	8'-0"	1
23	2' x 4' RECESSED LIGHT	REAR OFFICE	OSRAM	OSRAM-400-1/2	150	OSRAM-40	8'-0"	1
24	2' x 4' RECESSED LIGHT	REAR OFFICE	OSRAM	OSRAM-400-1/2	150	OSRAM-40	8'-0"	1
25	2' x 4' RECESSED LIGHT	REAR OFFICE	OSRAM	OSRAM-400-1/2	150	OSRAM-40	8'-0"	1
26	2' x 4' RECESSED LIGHT	REAR OFFICE	OSRAM	OSRAM-400-1/2	150	OSRAM-40	8'-0"	1
27	2' x 4' RECESSED LIGHT	REAR OFFICE	OSRAM	OSRAM-400-1/2	150	OSRAM-40	8'-0"	1
28	2' x 4' RECESSED LIGHT	REAR OFFICE	OSRAM	OSRAM-400-1/2	150	OSRAM-40	8'-0"	1
29	2' x 4' RECESSED LIGHT	REAR OFFICE	OSRAM	OSRAM-400-1/2	150	OSRAM-40	8'-0"	1
30	2' x 4' RECESSED LIGHT	REAR OFFICE	OSRAM	OSRAM-400-1/2	150	OSRAM-40	8'-0"	1

1. ALL FIXTURES SHALL BE INSTALLED IN ACCORDANCE WITH THE MANUFACTURER'S INSTRUCTIONS AND ALL APPLICABLE CODES.
 2. ALL FIXTURES SHALL BE INSTALLED IN ACCORDANCE WITH THE MANUFACTURER'S INSTRUCTIONS AND ALL APPLICABLE CODES.
 3. ALL FIXTURES SHALL BE INSTALLED IN ACCORDANCE WITH THE MANUFACTURER'S INSTRUCTIONS AND ALL APPLICABLE CODES.