

# TAX MAP I13

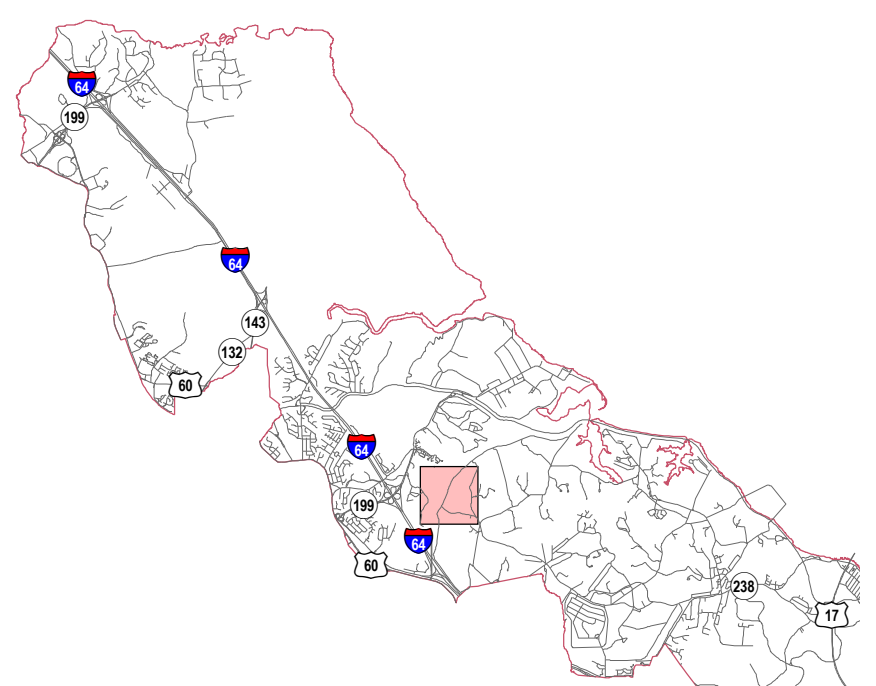
August 01, 2018

THIS IS NOT A LEGAL PLAT.  
This map should be used for  
information purposes. It is not  
suitable for detailed planning.

Prepared by York County GIS  
Department of Information Technology

### KEY TO ADJACENT SHEETS

H14	I14	J14
H13	a b c d	J13
H12	I12	J12

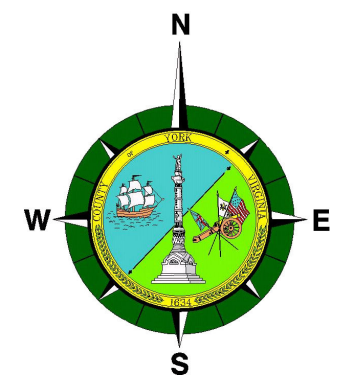
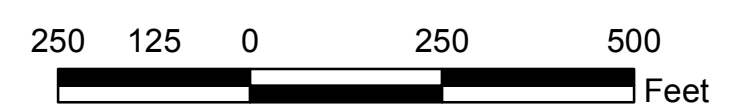


### TEXT LEGEND

- 201 Street Address
- 1 or A Lot Number
- 25(4) or 25- Map Number
- G14c-1234-4567 GPIN
- YORK RIVER Water Feature

### LINE LEGEND

- Property Lines
- Rights of Way
- Section Boundary
- Subdivision Boundary
- County Boundary
- Easements



# I13